



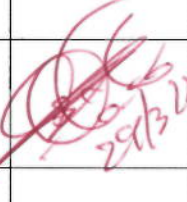




NIGERIAN CONTENT DEVELOPMENT AND MONITORING BOARD (NCDMB)

NCDMB ENDOWED CHAIR FRAMEWORK

REV	DATE	REASON FOR ISSUE	OFFICER R&D PREPARED	SUPERVISOR R&D REVIEWER	GM RS&D CHECKED	DPRS RECOMMENDED	ES APPROVED
1.0	--/--/2021	ISSUED FOR REVIEW & COMMENTS					 29/3/20

NCDMB – Nigerian Content Tower
Oxbow-lake - Swali,
P.M.B 10, Yenagoa
Bayelsa State.

Document No:---

1.0 Introduction

A \$50 million Nigerian Content Research and Development Fund (NCRDF) has been created to provide sustainable funding for NCDMB interventions in Research and Development in line with the 10 year R&D roadmap. The NCRDF provides that 5% out of the \$50 Million NCRDF be applied as Endowment Fund, to advance studies, innovation and investigation in institutions of learning.

This policy document provides a guide on the application of the Endowment Fund, selection of thematic areas for award of professorial chair, selection of beneficiary institutions, implementation protocol and key performance indicators.

2.0 Background

An endowed professorship (or endowed chair) is a position permanently paid for from an endowment fund specifically set up for that purpose. The Chair is designed to leverage on best talents in an institution to carry out investigation, innovation and partnerships to solve societal problems. Endowment Fund enables institutions attract creative talents that will contribute to quality outcomes. Institutions that have professorial chair also impact students through quality of teaching, mentorship and research outcomes

Corporations support endowed chairs to give back to institutions that provide them with creative talents. The relationship also connects corporations with professors, researchers and students who can inspire innovation and creative ideas in a competitive environment.

Through NCDMB Professorial Research Chair, the Board is desirous of contributing to finding solutions to diverse thematic areas critical to human capital development, technology development and environmental sustainability.

3.0 Focus Areas of Endowment Chair

The focus areas of the NCDMB endowment Fund shall be:

1. Endowment Chair for Entrepreneurship Development – The focus of this endowment will be to research into, create, impart and manage entrepreneurial mindset and skills of students.
2. Endowment Chair for Value systems and Orientation- Focus on investigation into psychosocial factors that influence certain tendencies among youths and propose programmes that would shape orientation of youths towards self-reliance and economic development.
3. Endowment Chair for Local Content Solutions- Focus on investigation on identifying binding constraints to local production of goods and services and designing programmes to unlock opportunities that will further advance local content development.

There are various types of professorial chair including permanent endowed chair, term endowed chair or endowment linked to academic administrative (deanship) position. The Board shall adopt the term endowed chair model which has the following attributes:

1. Name **"NCDMB Professorial Chair"**.
2. Tenure – 3 years
3. Faculties – social science, sciences, engineering, technology, Medicine.
4. Institutions – Universities and polytechnics with accreditation in the focus areas of interest. Selection of institutions shall be based on capability criteria outlined by the Technical Advisory Board
5. Amount – minimum of N20 million and maximum of N50 million per annum
6. Career level- Doctorate degree and Professors. The selection of the holder of the Professorial Chair will be determined based on the criteria approved by the Technical Advisory Board
7. Source of funding –5% out of the \$50 million NCRDF (N950 million@380 Naira per \$)

4.0 Funds application

The grant will be utilized as follows:

1. Allowances and salaries of the Professorial chair
2. Research related activities conducted by the Professorial Chair
3. Publications related to the Professorial chair
4. Purchase of Starter packs for graduands of entrepreneurial development chair.

5.0 Governance Structure

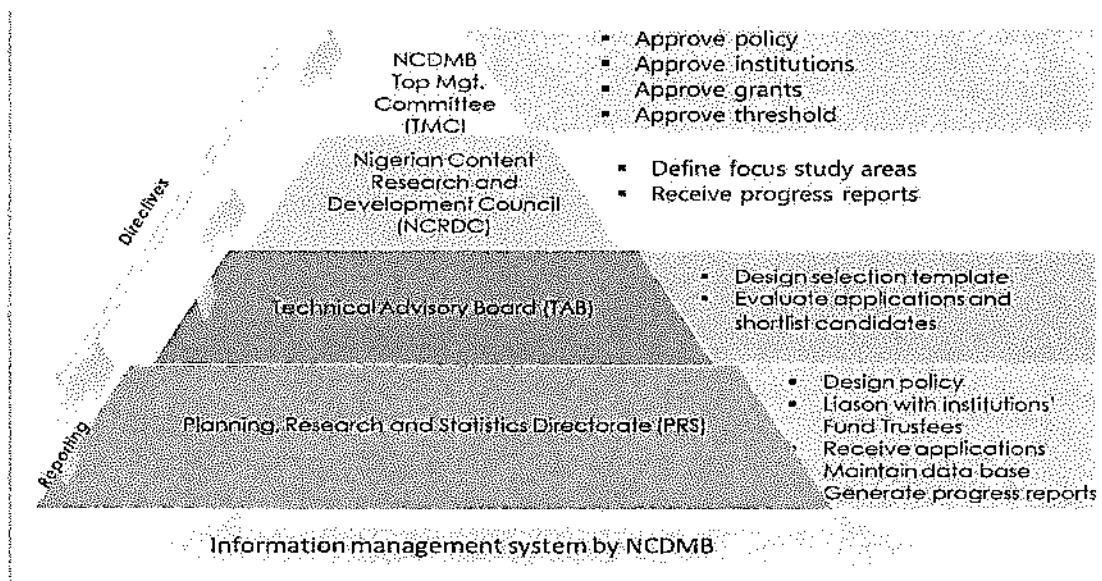
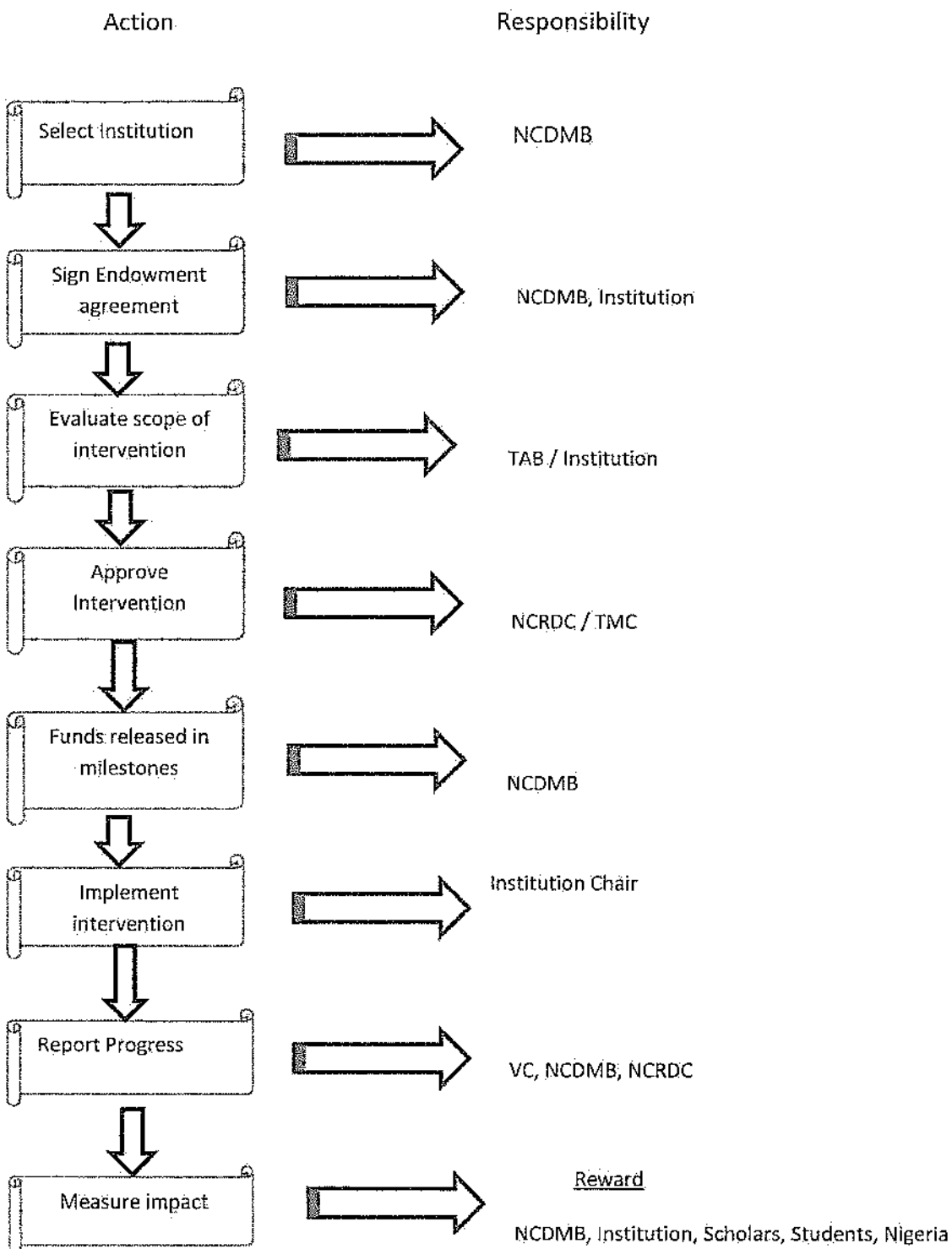


Fig. 1 Endowment Management Governance Structure

6.0 High-level Evaluation checklist

1. Strategic significance of subject (level of alignment to 3 focus areas)
2. Academic ranking
3. Research ranking
4. Management and leadership attributes of applicants
5. Availability of endowment policy and fund management structure in the institution.

7.0 Schematic of Implementation Procedures



8.0 Stewardship Reporting

The recipient (University/Polytechnic) of NCDMBs' endowment, shall submit annually an endowment report to the Board with summary activity of progress of research findings, fund disbursements and current investments and market values made with the fund donated for the Chair.

9.0 Key Performance Indicators

1. Award at least 3 professorial chairs per year.
2. Index positive change in academic and research ranking of Endowed institutions in Nigeria and globally.
3. Timely submission of reports.
4. Contribution to human capital development – job creation, entrepreneurship, employment, social harmony, inclusive growth, physical development.
5. Improve access to credible data for policy decisions on local content development and fact-based capacity building interventions.
6. Value orientation and new thinking among youths.

Approved for Implementation.



20/3/2022

Engr. Simbi Wabote, FNSE, FIPS

Executive Secretary NCDMB